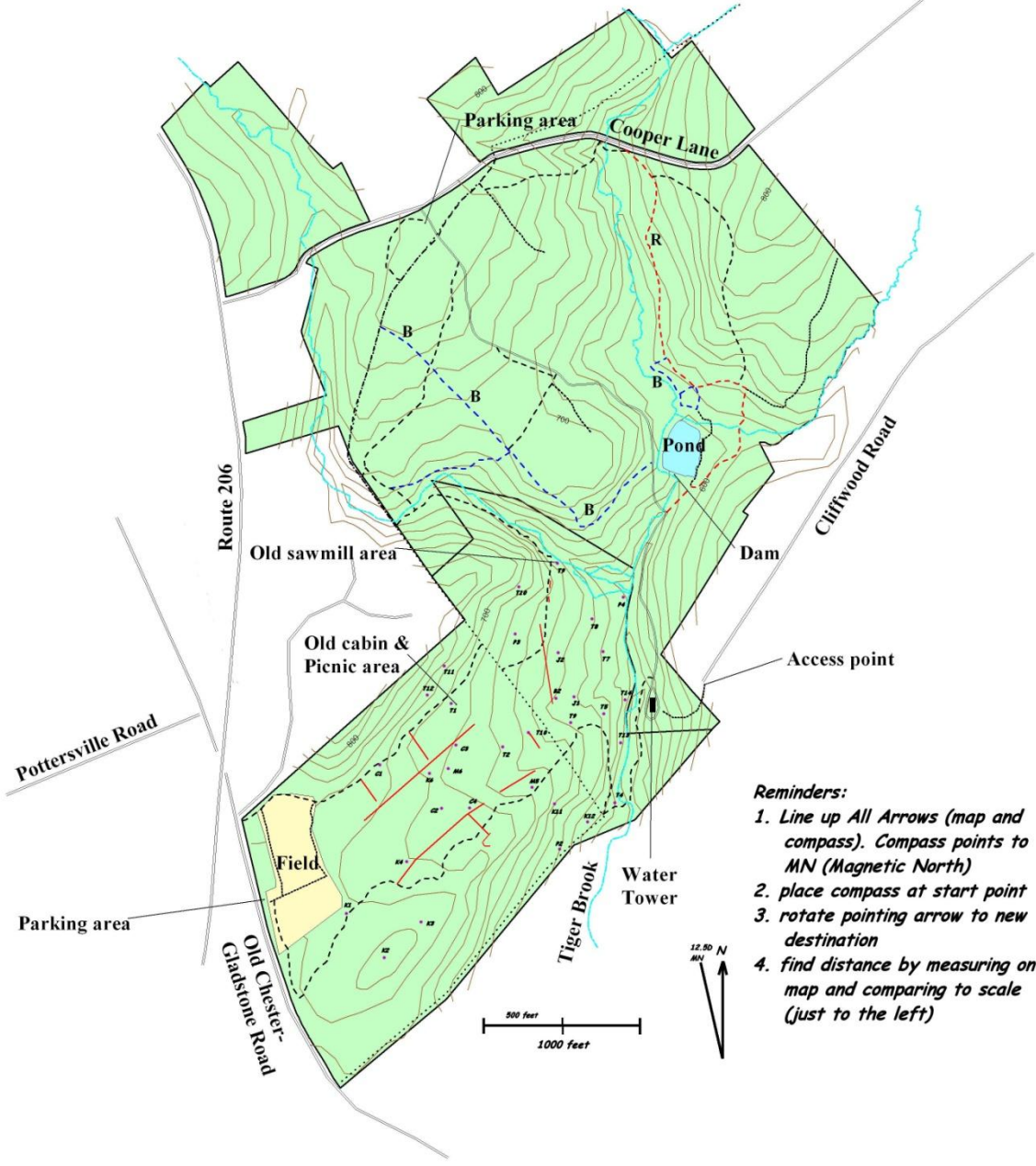


Parkland Trails Map

TOWNSHIP OF CHESTER
TIGER BROOK PARK & MACGREGOR PRESERVE



MacGregor Park Orienteering Course Map



- Reminders:**
1. Line up All Arrows (map and compass). Compass points to MN (Magnetic North)
 2. place compass at start point
 3. rotate pointing arrow to new destination
 4. find distance by measuring on map and comparing to scale (just to the left)

Legend	
	Wall
	Property boundary (approximate)
	Underground cable right-of-way
	Brook
	Red trail
	Blue trail
	Orange & Yellow trail
	Unmarked path
	Gravel road

This map was prepared by Gracie & Harrigan Consulting Foresters, Inc., P.O. Box 316, Far Hills, NJ 07931, as part of the mapping of park trails last revised January 2005.

This map was developed using NJDEP GIS digital data, but this secondary product has not been verified by NJDEP and is not state-authorized.

This is not a survey.

SCALE: 1"=400'

Trail 1 Orienteering Map

